

PANSY PROJECT



You will Need

Piece of cotton satin / linen fabric approx 25 x 25cm

DMC Stranded Cotton as per list

Crewel Needle size 9 /10

Preparation

Wash and iron the fabric.

Transfer the outline onto the fabric.

Draw in guidelines with a pencil.

Mount in hoop or frame ensuring that the fabric is drum tight.

DMC Stranded cotton used in this design

524

522

520

369

368

320

367

3747

341

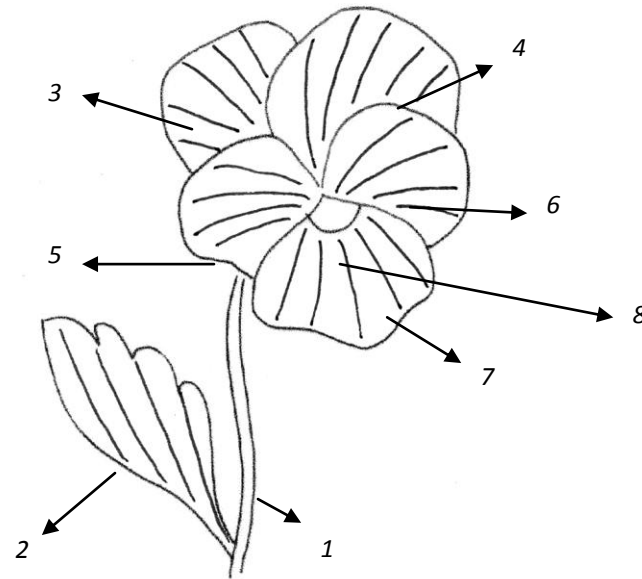
340

3746

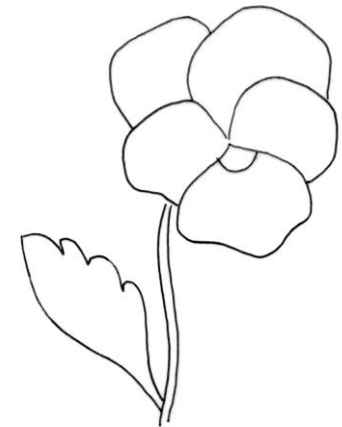
333

727

581





STITCH DIAGRAM



TRACING OUTLINE

PANSY INSTRUCTIONS

One strand of DMC Stranded cotton has been used unless otherwise indicated.

<p>1. STEM</p> <p>A. 524 light grey green B. 522 medium grey green C. 520 dark grey green</p>		<p>1. STEM</p> <p>Fill the stem with adjacent rows of split stitch.</p> <p>Start with the lightest shade and work across to dark with A B C.</p> <p>Work two lines of A & B and one line of C.</p>
<p>2. LEAF</p> <p>A. 369 pale green B. 368 Light green C. 320 Medium green D. 367 dark green</p>		<p>2. LEAF</p> <p>Outline the leaf in split stitch using two strands of B.</p> <p>Start at the top of the leaf and work long & short stitch down towards the stem as shown. Change to the next shade of colour each time until the leaf is filled.</p> <p>First row = two strands of A</p> <p>Second row = one strand of B</p>

LEAF CONTINUED



Third row = one strand C

Four row = one strand D

Continue down towards the stem in D.

3. ALL PETALS

- A. 3747 pale lavender
- B. 341 light lavender
- C. 340 medium lavender
- D. 3746 dark lavender
- E. 333 very dark lavender



PETALS

Outline each petal with two strands of split stitch in B. Fill each petal in long and short stitch starting with the back petal and working forward as shown.

Shade from the outside in towards the base from light to dark. Use two strands in the first row only and then change to one strand in all the subsequent rows.

Ensure that the lighter shades meet the darker shades where the petals overlap.

3. **Petal one** = C D E

4. **Petal two** = B C D E

5. **Petal three** = A B C D E

PETALS CONTINUED



6. Petal four = A B C D E

7. Petal Five = A B C D E

4. FLOWER CENTRE

- A. 727 yellow
- B. 581 lime green



8. CENTRE

Add a few straight stitches at the centre of petal five in A & B. Make a small French knot in B.